



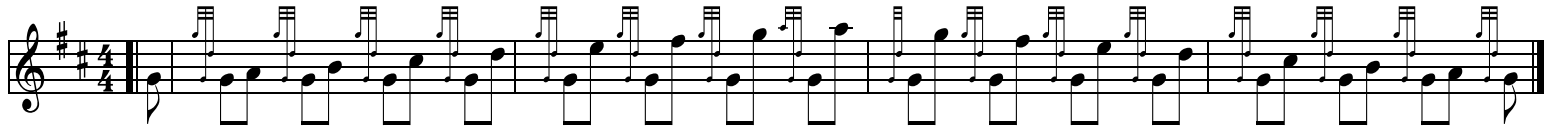
## 1.6 Strikes



## 2.1 Doublings



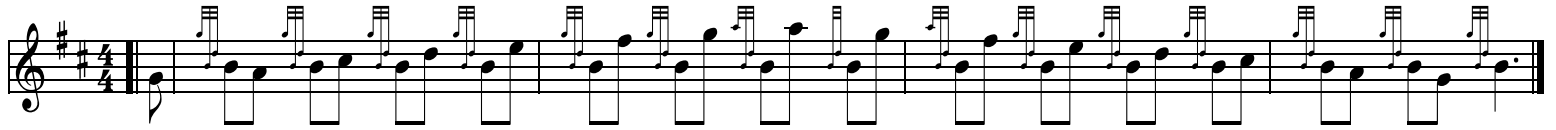
### Low G Doublings from every melody note



### Low A Doublings from every melody note



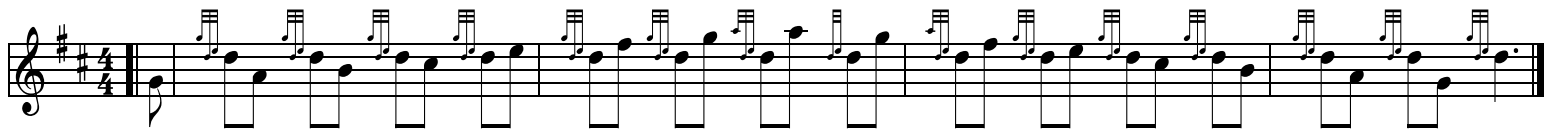
### B Doublings from every melody note



### C Doublings from every melody note



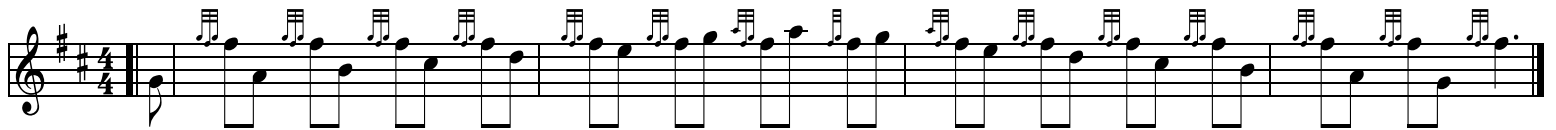
### D Doublings from every melody note



### E Doublings from every melody note



### F Doublings from every melody note



### High G Doublings from every melody note





\*



**2.3 d Grips to E - Leumluath - Offbeat \* have a b gracenote**



**2.4 Birls**



**2.5 High G Gracenote Birls**



**2.5 a taorluath to Taorluath Onbeat**



**2.5 b taorluaths to Low A -Onbeat \* are with a B gracenote**



\*



**2.5 c taorluath to Taorluath Offbeat**

Musical notation for 2.5 c taorluath to Taorluath Offbeat. The piece is in G major (one sharp) and 6/8 time. It consists of a single staff with a treble clef. The melody is a sequence of eighth notes, with some notes beamed in pairs. The rhythm is consistent throughout the piece.

**2.5d taorluaths to Low A -Offbeat \* are with a B gracenote**

Musical notation for 2.5d taorluaths to Low A -Offbeat. The piece is in G major (one sharp) and 6/8 time. It consists of a single staff with a treble clef. The melody is a sequence of eighth notes, with some notes beamed in pairs. The rhythm is consistent throughout the piece.

\*

Musical notation for 2.5d taorluaths to Low A -Offbeat (continued). The piece is in G major (one sharp) and 6/8 time. It consists of a single staff with a treble clef. The melody is a sequence of eighth notes, with some notes beamed in pairs. The rhythm is consistent throughout the piece.

**2.5 e Taorluath to Taorluath Offbeat USING ac,bc,**

Musical notation for 2.5 e Taorluath to Taorluath Offbeat USING ac,bc (first line). The piece is in G major (one sharp) and 12/8 time. It consists of a single staff with a treble clef. The melody is a sequence of eighth notes, with some notes beamed in pairs. The rhythm is consistent throughout the piece.

Musical notation for 2.5 e Taorluath to Taorluath Offbeat USING ac,bc (second line). The piece is in G major (one sharp) and 12/8 time. It consists of a single staff with a treble clef. The melody is a sequence of eighth notes, with some notes beamed in pairs. The rhythm is consistent throughout the piece.

**2.6 Tachums**

Musical notation for 2.6 Tachums (first line). The piece is in G major (one sharp) and 2/4 time. It consists of a single staff with a treble clef. The melody is a sequence of eighth notes, with some notes beamed in pairs. The rhythm is consistent throughout the piece.

Musical notation for 2.6 Tachums (second line). The piece is in G major (one sharp) and 2/4 time. It consists of a single staff with a treble clef. The melody is a sequence of eighth notes, with some notes beamed in pairs. The rhythm is consistent throughout the piece.

Musical notation for 2.6 Tachums (third line). The piece is in G major (one sharp) and 2/4 time. It consists of a single staff with a treble clef. The melody is a sequence of eighth notes, with some notes beamed in pairs. The rhythm is consistent throughout the piece.